



Capability Statement

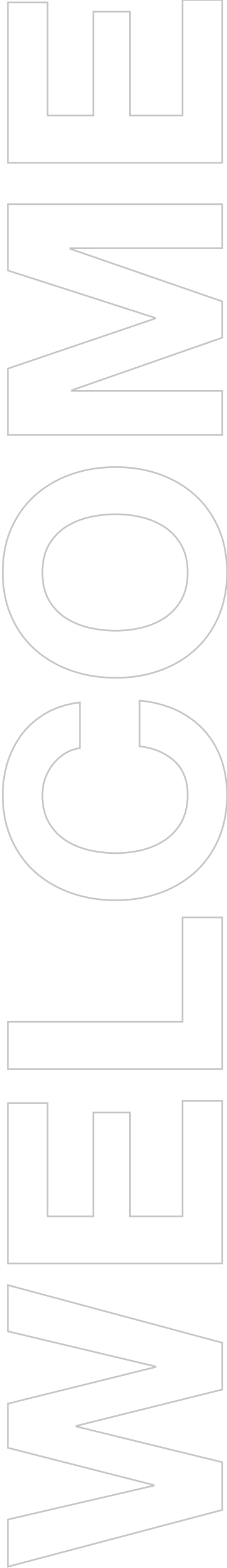
www.xcircle.com.au

Table of Contents

Who we are	01
Key team members	02
Our Facilities	04
Design Capabilities	05
Manufacutring Equipment	06
Recent Projects	07
Modular Solution Offering	16
Footprint	17
Contact Details	18



**XCircle Pty Ltd produces
Engineered to Order critical
infrastructure solutions for some
of the world’s largest
international data centre,
resource, transport, and
infrastructure companies.**





Our in-house design, engineering, automated manufacturing, electrical and mechanical capabilities complement our turnkey critical infrastructure and diverse modular, rapid deployment solutions.

INTRO

Who we are

XCircle produces **Engineered to Order** critical infrastructure solutions for some of the world's largest international data centre, resource, transport, and infrastructure companies.

XCircle provides **complete integrated** solutions including prefabricated modules, electrical supply and distribution, cooling and IT space. Our in-house design, engineering, manufacturing, electrical and mechanical capabilities complement our **turnkey** critical infrastructure and diverse modular, rapid deployment solutions.

In 2023, XCircle was recognised by CIOReview Magazine as one of the **Top 20 Most Promising Australian Tech Companies.**



Key team members



Justin Kellerman
Chief Executive Officer

Accomplished executive, currently serving as the Chief Executive Officer (CEO) at XCIRCLE.

With a strong background in operations, data center design and project management, Justin has consistently demonstrated his expertise in driving operational excellence and delivering large scale critical infrastructure successful projects successfully across the world.



Pierre Parente
Head of Design and Engineering

With over 30 years of industry leadership, Pierre ensures top-tier design and engineering excellence at XCIRCLE

Pierre is the Head of Design and Engineering at XCIRCLE, he is known for his design capabilities and strong manufacturing knowledge with a vast experience with Amada machinery, being an industry leader in their field.

He is committed to ensuring that XCIRCLE delivers the highest quality products and services to its customers.



Sigi Drexler
Business Development Manager

20 years of global expertise in driving infrastructure and modular data centre solutions.

Sigi has worked for over 20 years in global organizations across APAC and EMEA, driving infrastructure portfolios and solutions growth in the traditional and modular Data Centre market segments.

In the past 10 years he has implemented 100+ modular solutions in the DC, Telco and Financial Services segments.

Key team members



Hein Vorster
Founder and
Chairman

30-year veteran in critical infrastructure solution manufacturing.

Hein provided critical infrastructure solutions for a range of industries from Telcos to the defence force industries, and boasting a client list which includes Microsoft, Teraco, HP, Vodacom, RAF, Multiplex, Helios and many others, Hein boasts unrivalled experience and delivery history.



Lex van Wyk
Founder and
Director

Industry veteran and founder of Teraco DC.

Teraco is currently the largest data centre company in Africa, which counts Berkshire LLC and Digital Realty as shareholders.

Lex was instrumental in establishing Teraco as a major data centre player and is one of the co-founders of XCircle.



Gideon van Niekerk
Founder and
Director

Veteran founder, Chartered Accountant and infrastructure expert.

Gideon is a registered CA(SA), has served as a CEO and established several highly successful large businesses across various industries

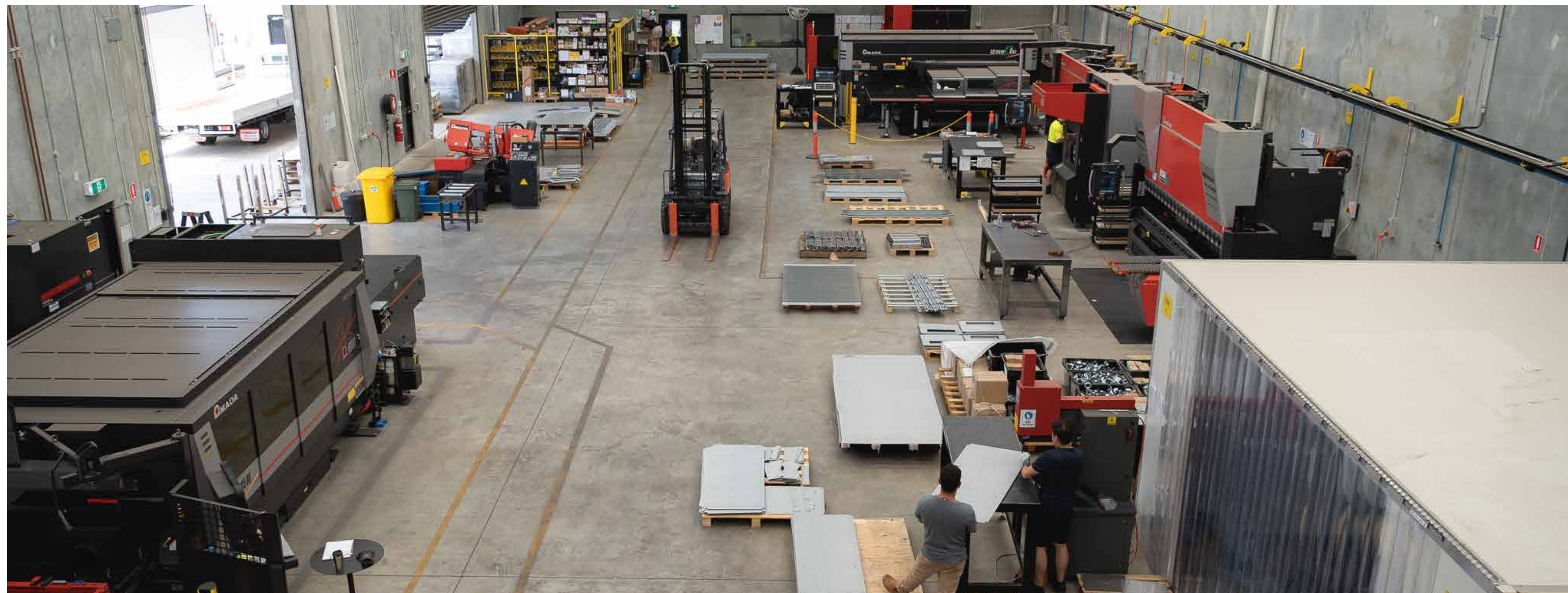
He has occupied board seats while overseeing international expansions and large commercial property portfolios along with gaining key expertise in successful mergers and acquisitions.



Our Facilities

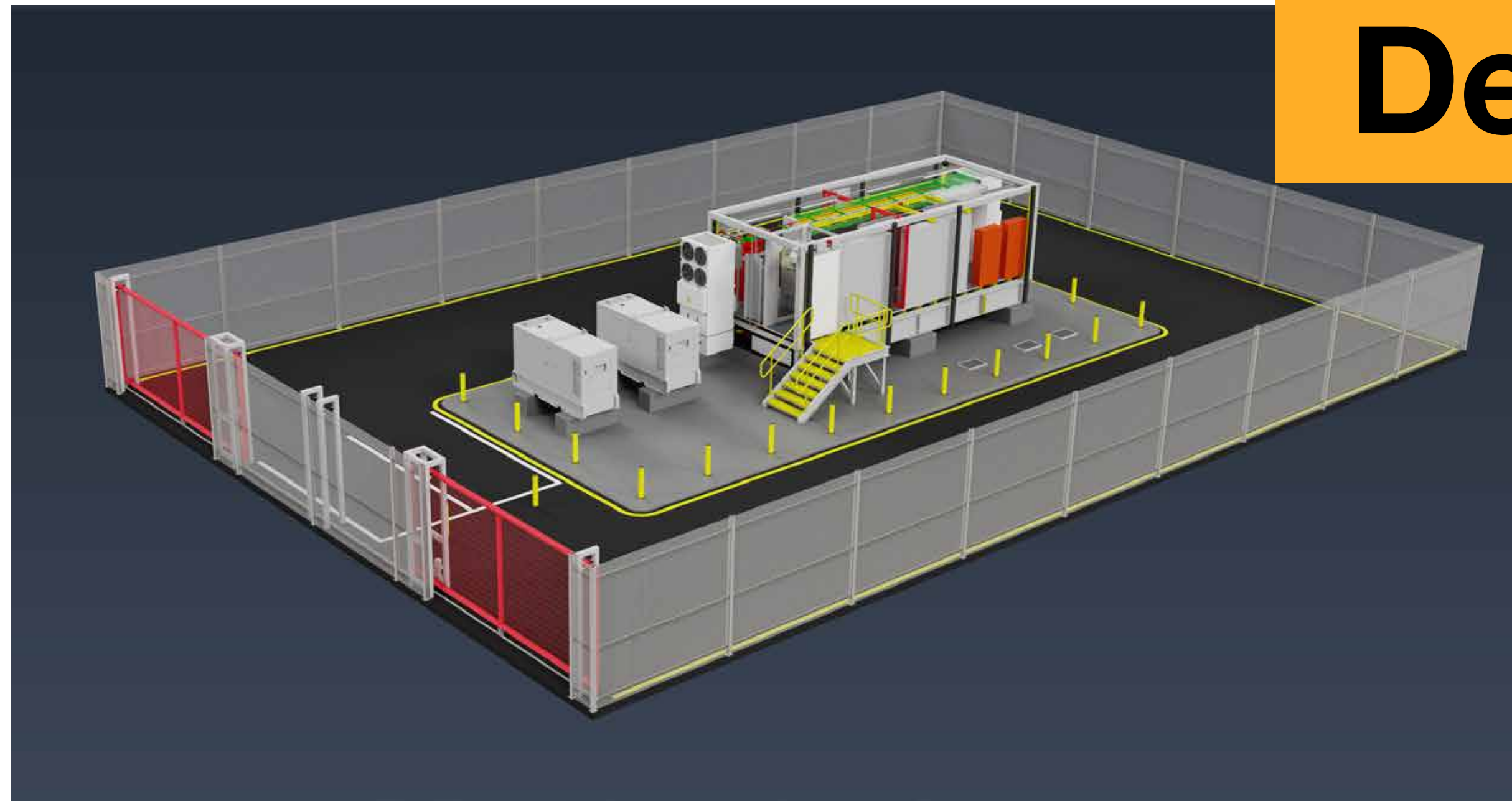
Multiple custom built production, integration and testing facilities in Perth, WA.

Geared for the manufacture of modular critical infrastructure and all related equipment and componentry.



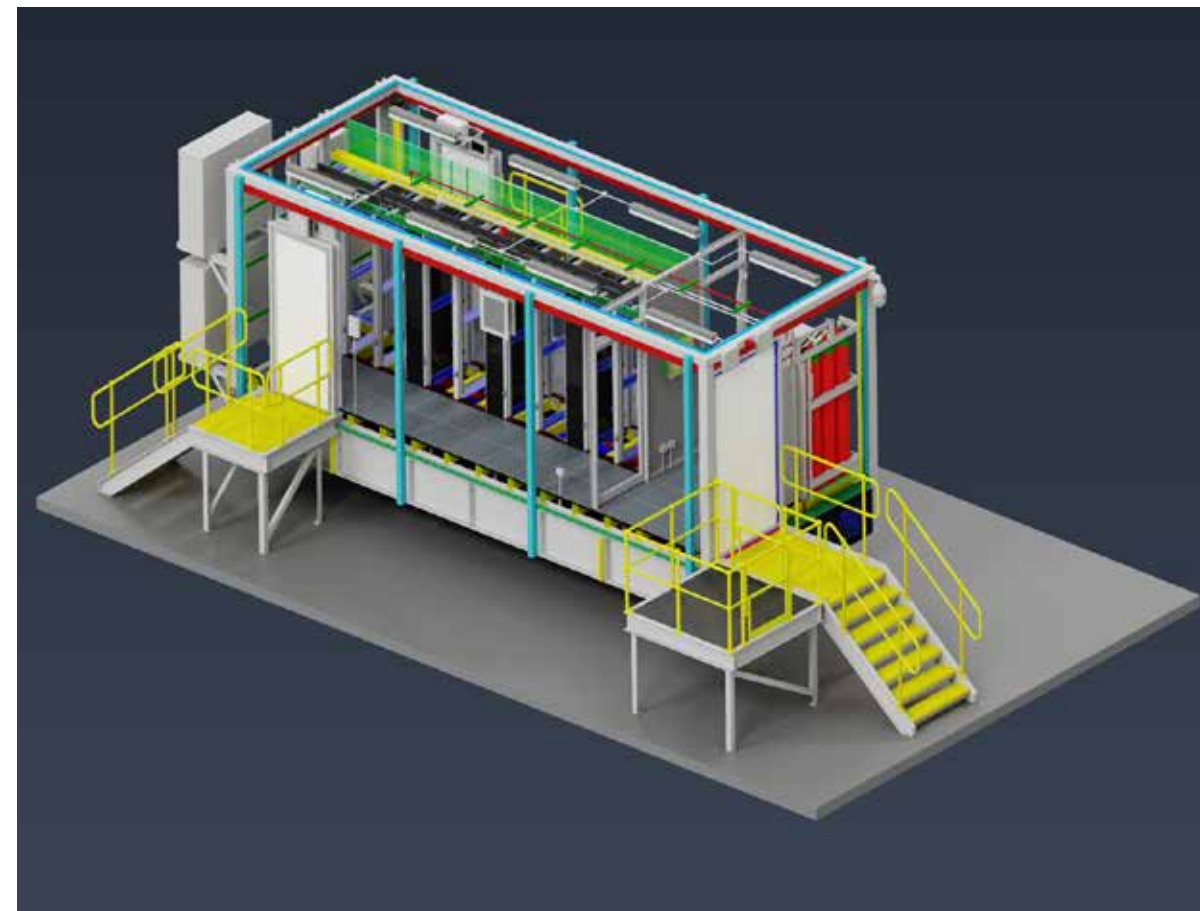
Design

Capabilities



XCircle's in-house capabilities include:

- Site survey, selection and planning
- 3D modelling and BIM integration
- Civil design and engineering including foundations
- Structural design, engineering and certification
- Electrical design, engineering and certification
- Mechanical design, engineering and certification, including HVAC and gas detection
- Fire design, engineering and certification, including passive and active fire protection



Manufacturing Equipment



State of the art Amada equipment backbone:

- LC 2515 fibre laser/punch combination
- Ensis 3015 rotary pipe fibre laser
- HG 1003 ATC and HRB 2204 press brake

Other key items:

- 2 x 10t overhead cranes (20t total capacity)
- Gluestream rubber mould machine
- Powder coating pre-cleaning tanks, spraybooth and oven
- Fanuc Robot Arc Mate 120iD robot welding system



STEWART
POWER

Recent
Projects

CFNR Perth Project



Australian Government
Department of Finance

MULTIPLEX



CFNR

Perth Project

XCircle was contracted to design, engineer and manufacture ten (10) turn-key communications modules housing critical power and IT equipment to support the modular accommodation blocks for the Western Australian government's Centre for National Resilience (CFNR) project in Bullsbrook.

- All design, engineering, manufacturing and fit out and completed in our factory in Wangara
- Full service fit out included all electrical and mechanical installation and certification
- Full factory acceptance testing and certification completed prior to delivery
- Modular construction to 60/60/60 FRL



SKA SUT3 Testbed Room



SKA SUT3

Testbed Room

Located in Geraldton, Western Australia, Square Kilometre Array Observatory (SKAO) Australia, had a requirement for a modular data centre to test and configure their IT and radio equipment for deployment to their multiple Remote Processing Facilities (RPF) at the main site in Murchison, Western Australia.

XCircle was engaged to design, construct, test, deliver and install a 40kW, 7-rack modular data centre which was completed 8 weeks from order.

- All design, engineering, manufacturing and fit out was completed at our facility in Wangara, WA.
- Full service fit out included all electrical and mechanical installation and certification.
- Supply and installation of a 40kW UPS and battery system including electrical distribution to IEC socket for PDU connection.
- Supply and installation of cooling and humidity control systems within the data centre.
- Provision for underfloor piping to facilitate a chilled water-cooling system.
- Supply and installation of fire detection including VESDA, and inert gas suppression system.
- Design, supply and installation of a full monitoring and reporting system including equipment monitoring, environmental monitoring and water leak detection.
- Modular construction structurally certified to withstand Wind Region D extreme weather events.
- C5M paint coat system to withstand harsh marine and corrosive environments.
- Full factory acceptance testing, and certification completed prior to delivery.
- Delivery, installation, commissioning and testing on site.
- Support and maintenance of the data centre equipment for 12 months.



BHP

West Musgrave Data Centres

BHP



BHP

West Musgrave Data Centres

In January 2023, XCircle was awarded a highly sought-after contract to design, supply, and install two 40kW, 6-rack modular data centres for BHP West Musgrave. The contract was the culmination of a rigorous tender process that began in June 2022, which saw multiple companies compete for the opportunity to work with BHP.

XCircle impressed the selection committee with their innovative approach, advanced technology, and ability to deliver the project within the specified timeframe and budget.



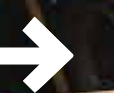
- All design, engineering, manufacturing and fit of two modular data centres to be completed by June 2023.
- Supply and installation of a 2N, 40kW UPS and battery system with 20 mins autonomy and including electrical distribution to equipment racks in an XCircle custom designed and manufactured UPS rack.
- Supply and installation of 40kW of in-row cooling in N+1 including integrated outdoor condenser mounting to allow for transport in-situ.
- Supply and installation of six (6) 600mm wide XCircle equipment racks and one (1) 800mm wide XCircle ODF rack.
- Design, supply and installation of fibre structured cabling system in conjunction with Codecom.
- Provision for underfloor cabling and piping using XCircle's raised floor design solution.
- Supply and installation of fire detection including VESDA, and inert gas suppression system.
- Design, supply and installation of a full monitoring and reporting system including equipment monitoring, environmental monitoring and water leak detection.
- Modular construction structurally certified to withstand Wind Region A.
- C3 paint coat system to all steel components
- Fire resistant to FRL 120/120/120 for the entire data centre including doors.
- CCTV surveillance and access control system.
- Airlock to prevent dust and contaminant ingress into the main equipment area.
- Full factory acceptance testing, and certification prior to delivery.
- Delivery, installation, commissioning and testing on site.
- Support and maintenance of the data centre equipment for 12 months.
- Site civil works including all concrete pads and plinths, including integration of underground electrical and fibre reticulation.



NEWest **Signalling Equipment Room**



Public Transport
Authority



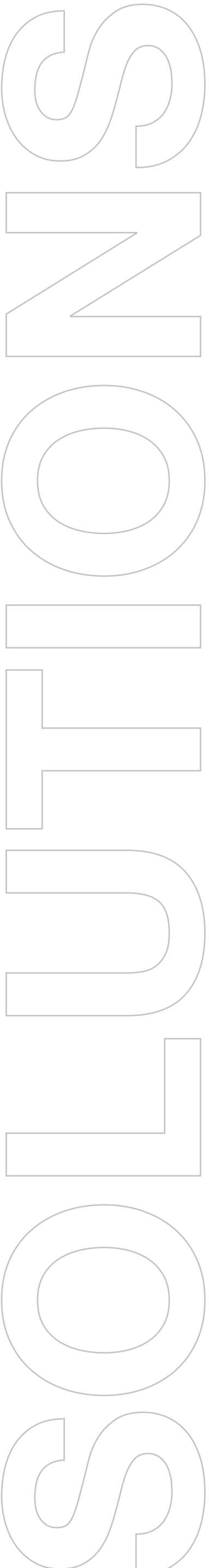
NEWest Signalling Equipment Room

XCircle was engaged by NEWest Alliance to construct five Signalling Equipment Rooms (SER) for the Western Australian Government Public Transport Authority (PTA) on the Yanchep Rail Extension (YRE) and Thornlie Cockburn Link (TCL) Project.

Measuring 18 metres long, 6 metres wide and 4.5m high, the SERs form part of the critical infrastructure required for PTA's project to extend the YRE metro rail network from Butler to Yanchep and TCL from Thornlie to Cockburn. The SERs house critical power, communications, and signalling equipment necessary for the operation and automation of the commuter trains servicing this new link. XCircle was chosen to manufacture these after providing assurances that all SERs could be delivered in 3 months, including installation and testing at their respective final sites.

- 2-hour fire rated self-contained Signalling Equipment Room (SER)
- Electrical Room fitout, including multiple large switch boards
- N+1 cooling with integrated outdoor condensers housed in a covered and ventilated area
- Fire detection and gas suppression system
- Access control system
- Raised floor with integrated power tray and cooling trays
- Multiple entries for power, signalling and communications
- Design, engineering and manufacturing including factory acceptance testing
- Transport to site and installation including site acceptance testing and training





Modular

Solution Offering

XCircle offers a complete solution offering including:

- Site Assessment and Civil Works

- Design, Engineering and Certification

- Generators, Transformers, RMUs and Switch Boards

- Power Train Units (PTU)

- Cooling Distribution Units (CDU)

- Cable Landing Stations (CLS)

- Edge Data Centres (EDC)

- Communication Equipment Vaults (CEV)

- Equipment Supply

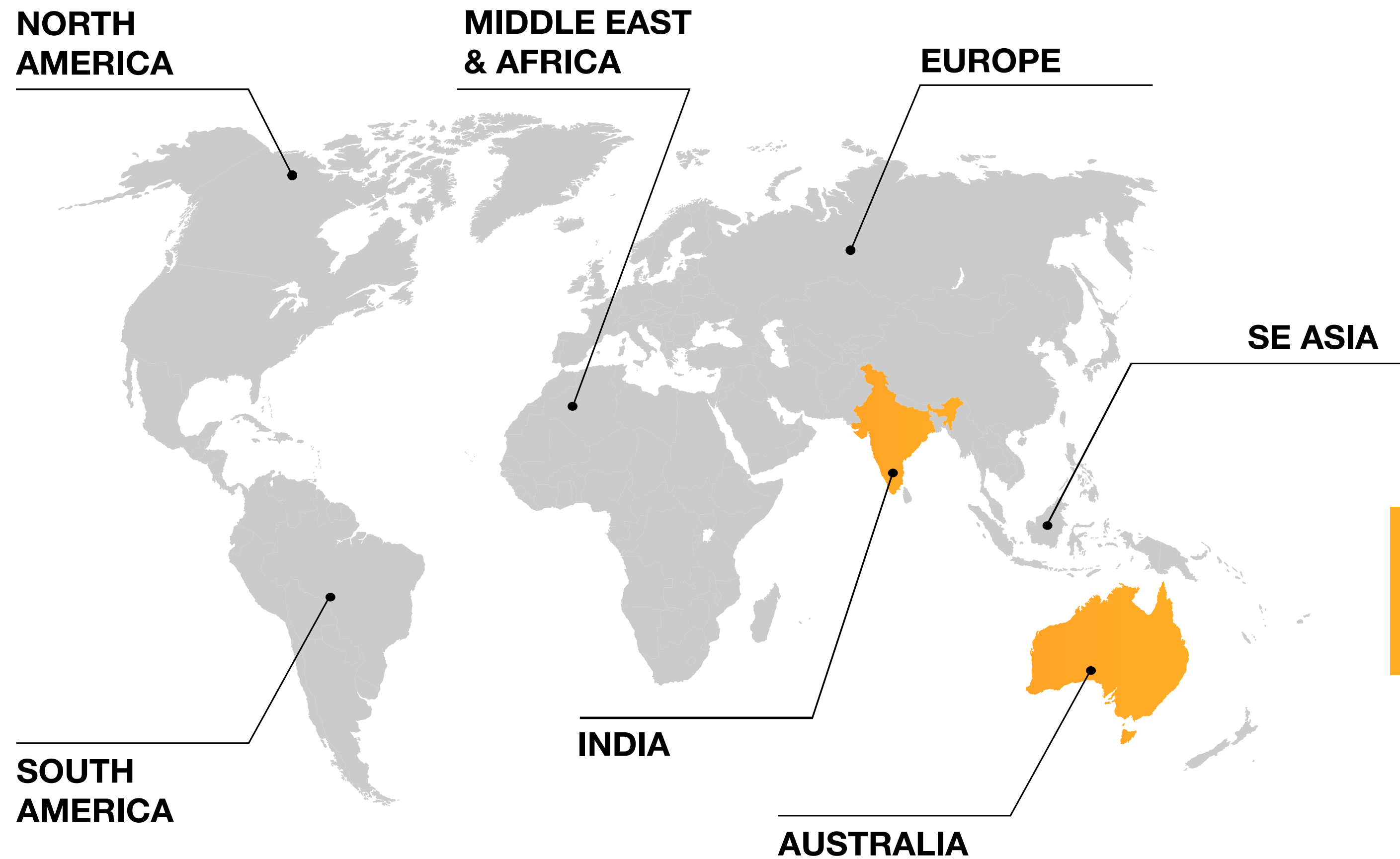
- Project Management

- Factory Services
(Design, Engineering and Production)

- Commissioning, Testing and Maintenance



FOOTPRINT



Worldwide Footprint

Built to applicable local and international standards, XCircle along with their JV partner – XCircle International based in Delhi, India – has the ability to manufacture and service multiple locations worldwide.



XCIRCLE

ENGINEERED TO ORDER

Contact Us

☎ +61 (0) 8 6363 5778

✉ info@xcircle.com.au

👉 xcircle.com.au

Perth Office

7 Distinction Road
Wangara, WA 6065

Sydney Office

Suit 2.01, Level 2
84 Pitt Street
Sydney, NSW 2000

